



## InSite | Environmental *Listeria* Species

InSite is a quick and easy test for the detection of *Listeria* species in food processing environments. The test contains a liquid media formulated with growth enhancers, antibiotics and chromogenic compounds specific to the growth of *Listeria* species. A color change from yellow to light brown/black is presumptive positive.

### Benefits:

- Easy-to-use with no preparation steps required
- Large sponge tip maximizes sample collection for accurate results
- Eliminates costly outside lab fees for an equivalent test
- Color results are easy to interpret – brown/black indicates presence of *Listeria* species
- Positive results in as little as 24 hours
- Confirmed negative results in 48 hours
- Self contained tube eliminates risk of contamination
- 12 month shelf life at refrigerated temperatures (2 – 8 °C)

### Sensitivity:

- 1-10 CFU/mL *Listeria* spp.
- Detects heat injured *L. monocytogenes* at low levels (10-50 CFU/ml of broth), even in the presence of high numbers of competing organisms

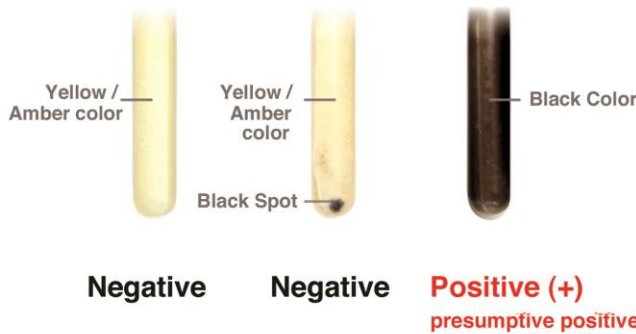


Watch an instructional demo at [youtube.com/HygienaTV](http://youtube.com/HygienaTV)



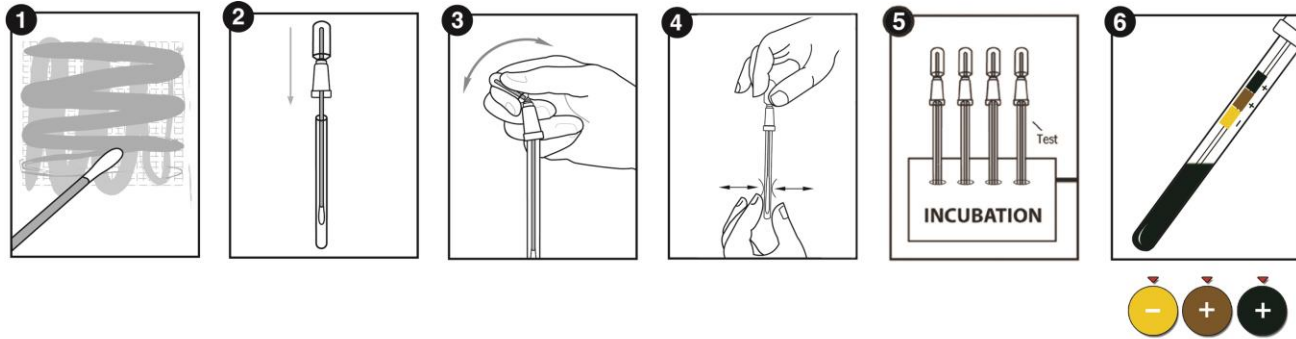
Find more products, instructional videos, and more at [www.hygiena.com](http://www.hygiena.com)

### Interpreting Results



Catalog No.	Description	Quantity
IL050	InSite <i>Listeria</i> Environmental <i>Listeria</i> spp. (Box of 50)	50
IL100	InSite <i>Listeria</i> Environmental <i>Listeria</i> spp. (Box of 100)	100

### InSite Listeria Procedure:



### Related Products:



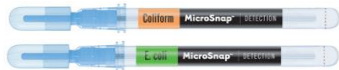
#### Digital Dry Block Incubators

Digital incubators are capable of up to 105 °C and flexible for any Hygiena test device. Available in two sizes. Blocks are sold separately.



#### InSite Salmonella

InSite Salmonella is a quick and easy test for the detection of *Salmonella* species in environments such as food processing facilities. The test contains a liquid media formulated with antibiotics, growth enhancers, and color changing compounds specific to the growth of *Salmonella* species. A color change from purple to bright yellow in 24 – 48 hours is presumptive positive.



#### MicroSnap Coliform & *E. coli*

MicroSnap Coliform & *E. coli* are rapid tests for detection and enumeration of Coliform bacteria. Results are available in 8 hours or less, depending upon required level of detection. Single figure organisms can be detected in 8 hours, enabling MicroSnap to give results in the same working day or shift. MicroSnap Coliform & *E. coli* detect down to 1-10 CFU.



#### MicroSnap Total

MicroSnap Total delivers total viable count (TVC) results in 7 hours, providing an advantage of knowing microbial levels in the same working day or shift. MicroSnap Total detects down to <100 CFU of Gram positive and Gram negative aerobic and facultative anaerobic bacteria.



#### MicroSnap Enterobacteriaceae

MicroSnap EB delivers results in 7 hours, providing an advantage of knowing microbial levels in the same working day or shift. MicroSnap EB detects down to 1-50 CFU and is an indicator for *Salmonella* spp.

Catalog No.	Description	Quantity
See catalog	Digital Dry Block Incubators	1
IS050	InSite Salmonella Environmental <i>Salmonella</i> Species Test	50
See catalog	MicroSnap Coliform & <i>E. coli</i>	100
See catalog	MicroSnap Total	100
See catalog	MicroSnap Enterobacteriaceae	100